

Maps of Japan



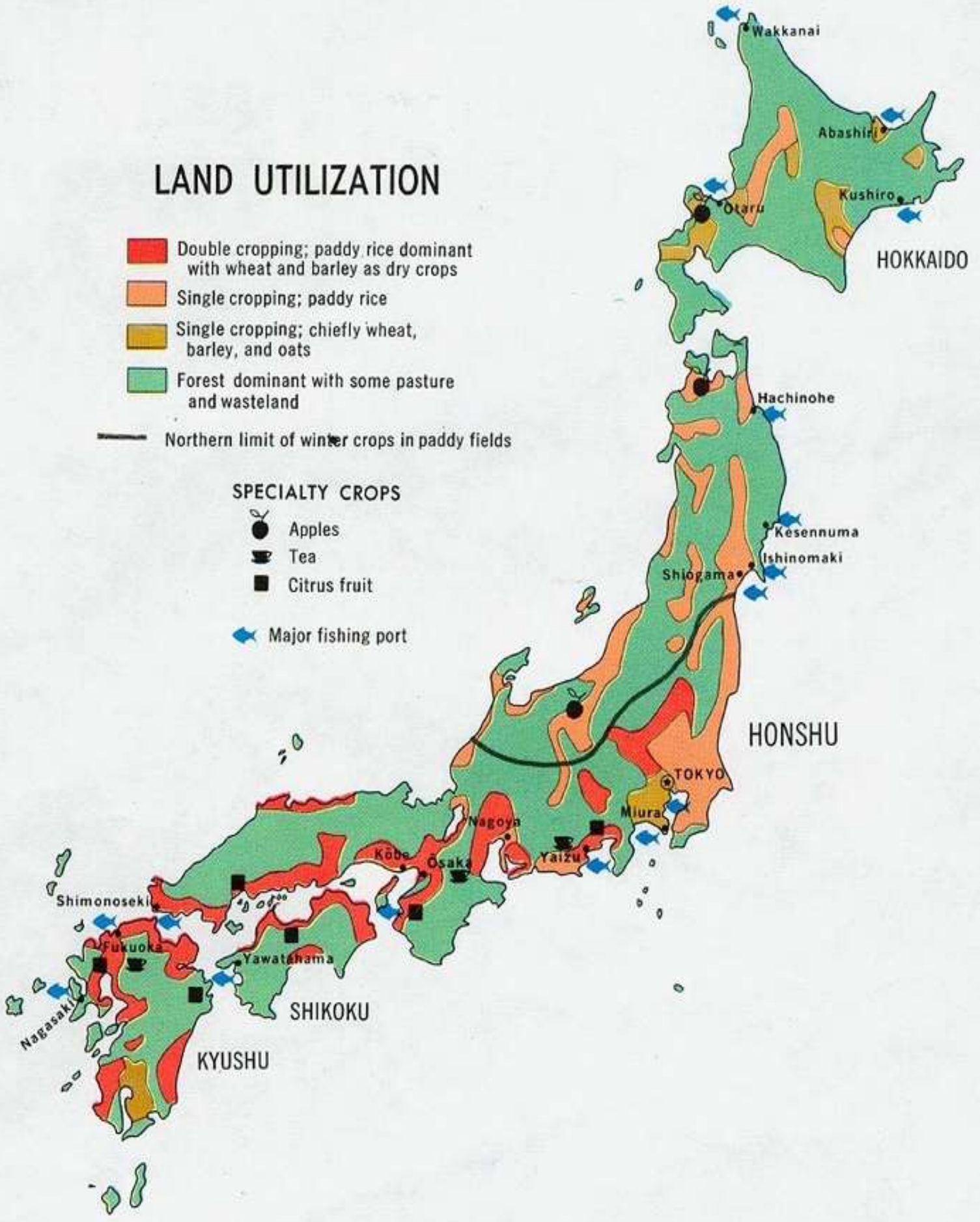
LAND UTILIZATION

- Double cropping; paddy rice dominant with wheat and barley as dry crops
- Single cropping; paddy rice
- Single cropping; chiefly wheat, barley, and oats
- Forest dominant with some pasture and wasteland

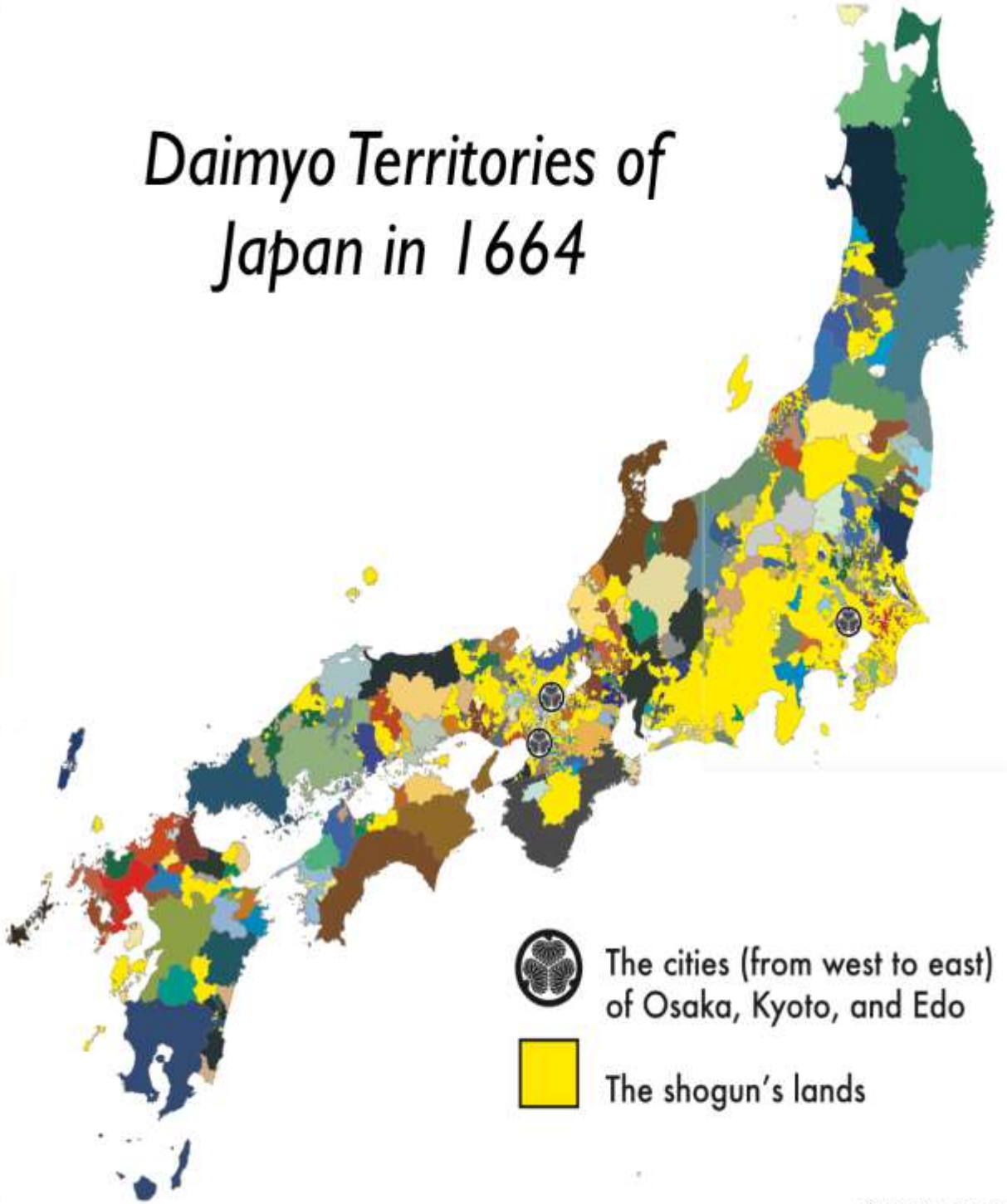
— Northern limit of winter crops in paddy fields

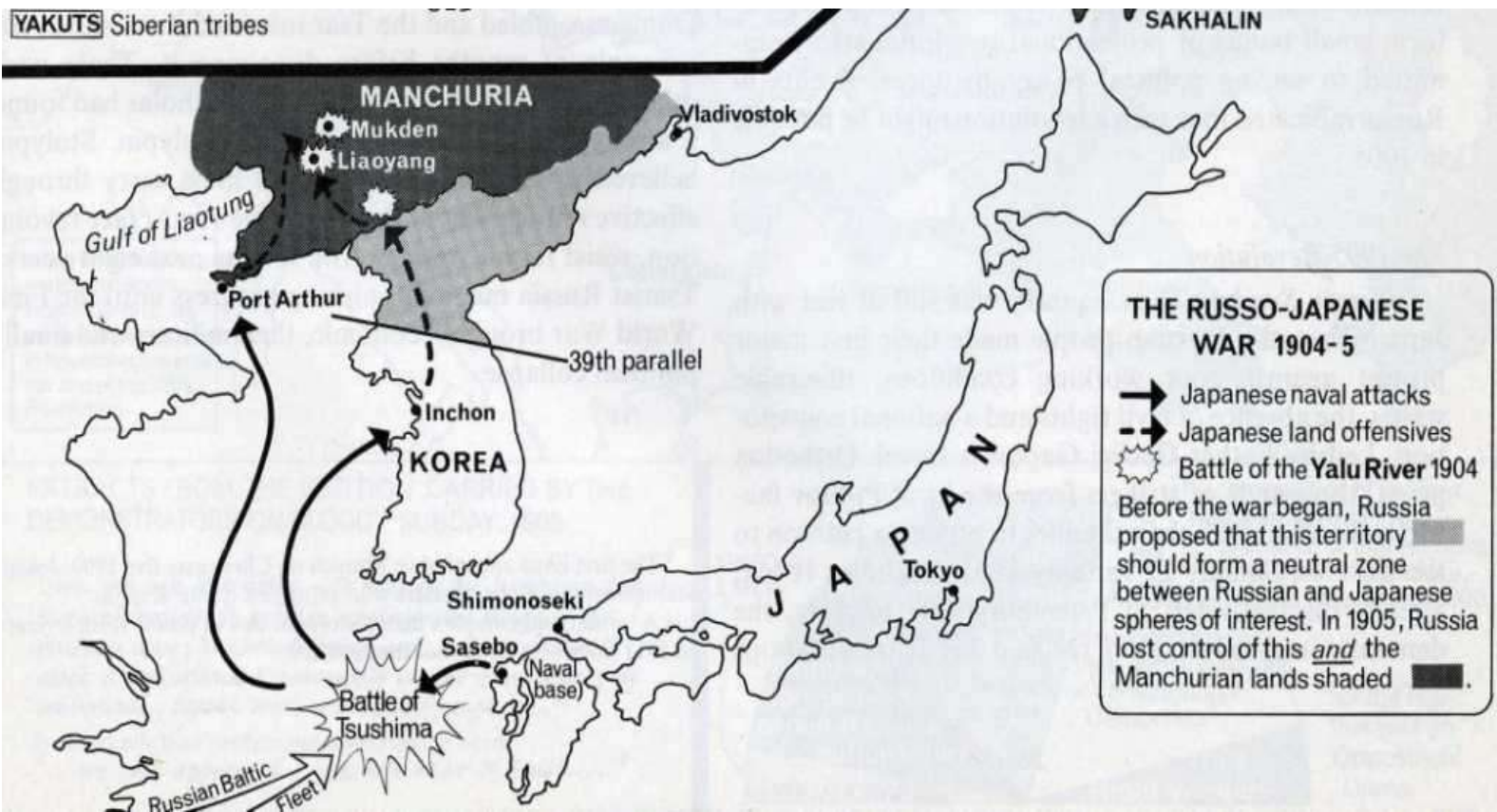
SPECIALTY CROPS

- Apples
- Tea
- Citrus fruit
- Major fishing port



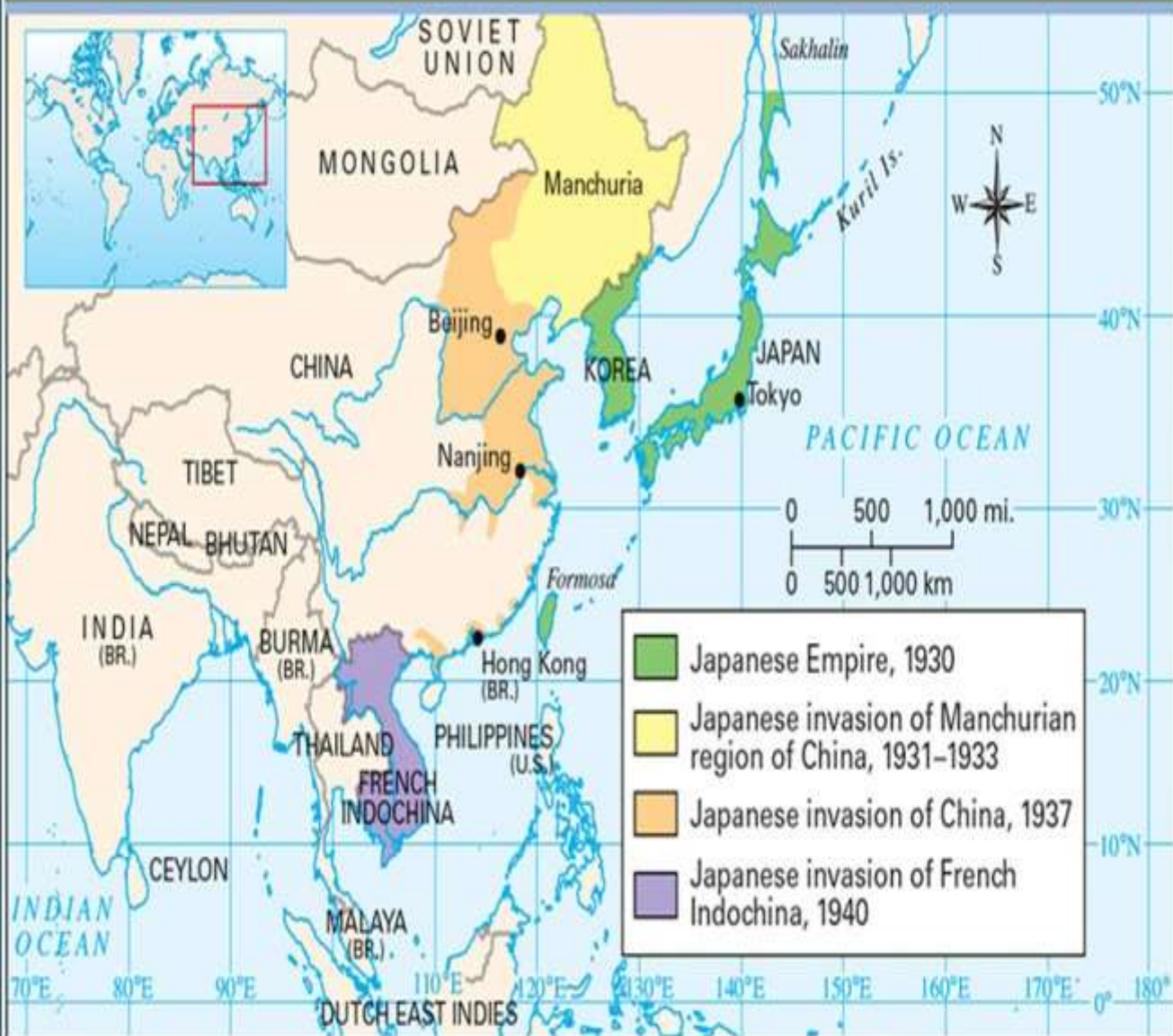
Daimyo Territories of Japan in 1664





Japanese Aggression; Pre-WWII

Japanese Territorial Expansion, 1931–1940



Japanese Empire 1942

