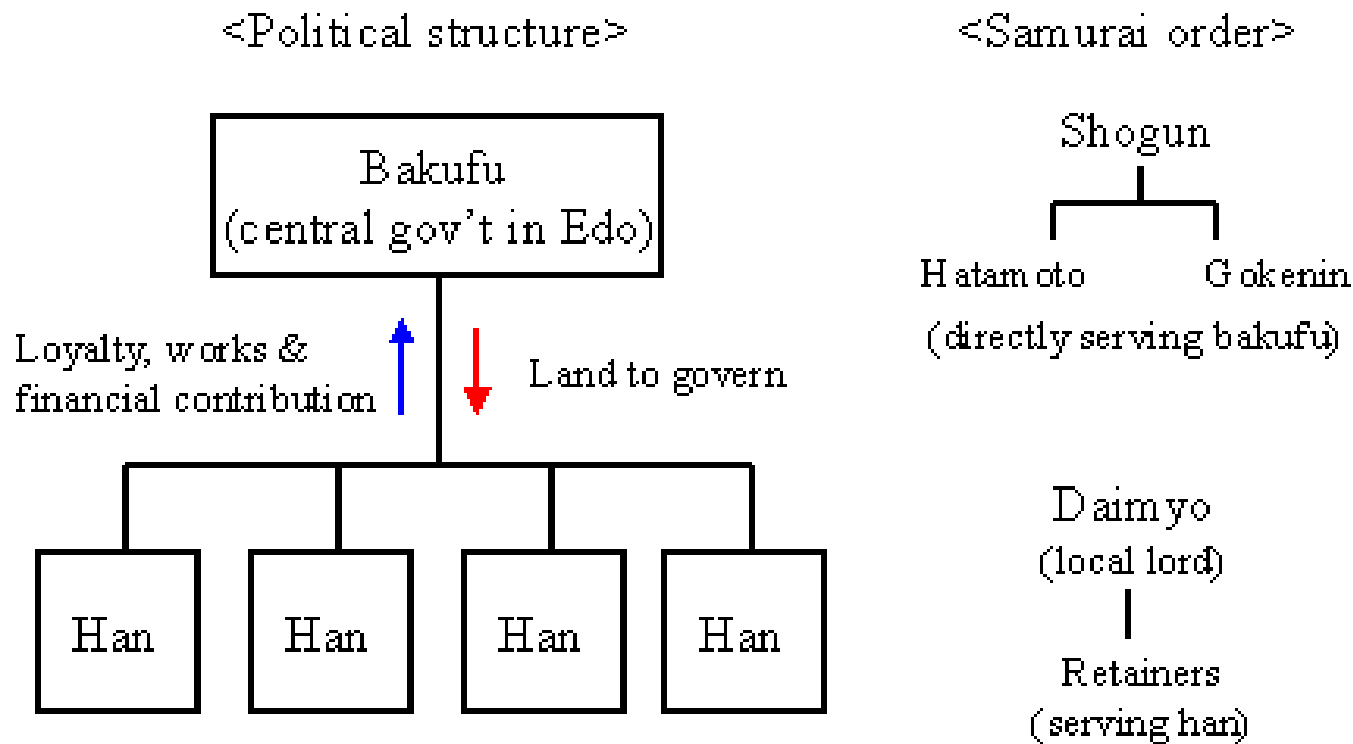


# The Late Edo Era

## Part Two

# The Commercial Ineptness of the Bakufu and Han Governments



Three types of hans:

- Shinpan (Tokugawa family)
- Fudai (original followers)
- Tozama (new followers)

Ronin  
(lordless samurai)



# Increasingly Rebellious Hans in the South



# Collapse of the Tokugawa Feudal Hierarchy

## Feudal Pyramid in Japan





# Commodore Mathew Perry and the 'Black Ships'



# Japanese depiction of Perry's Black Ship

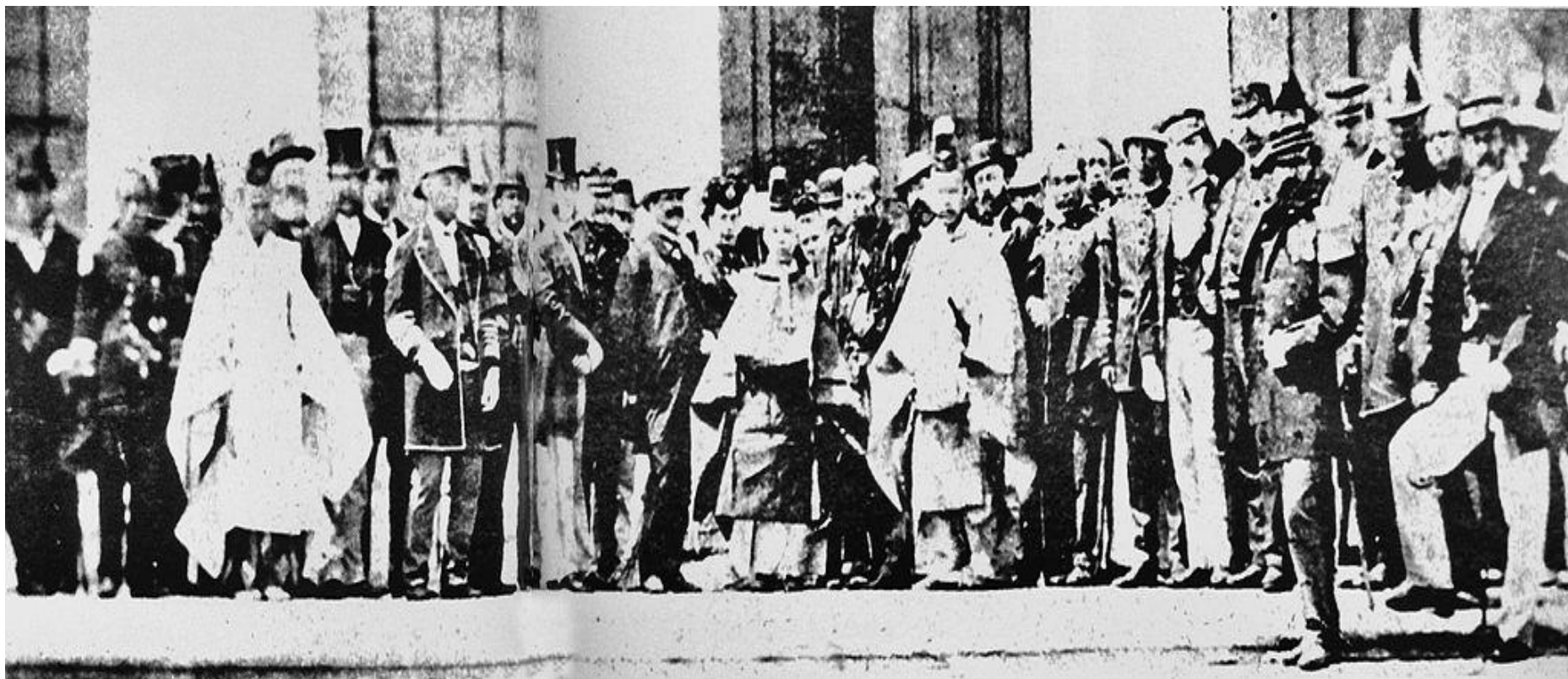


# The Treaties of Kanagawa & Shimoda





# The Boshin War – 1868 > 1869







# Last of the Tokugawa Shoguns – Tokugawa Yoshinobu





# Photograph of Edo -1865





